

2460. BL.10x101 L=205
1:5

2462. BL.10x123 L=205
1:5

2473. BL.10x140 L=205
1:5

2463. BL.10x123 L=205
1:5

2481. BL.20x111 L=256
1:5

2465. BL.10x130 L=284
1:5

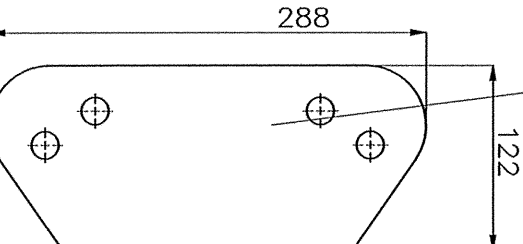
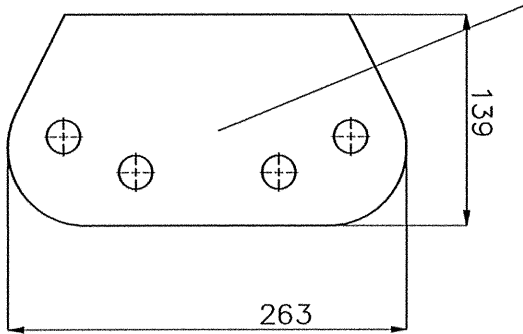
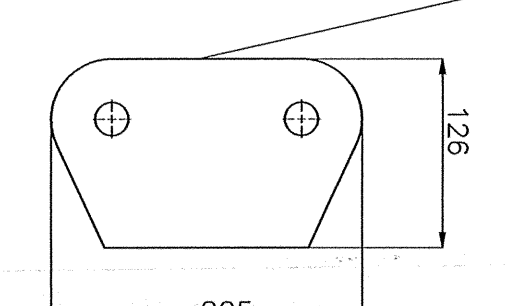
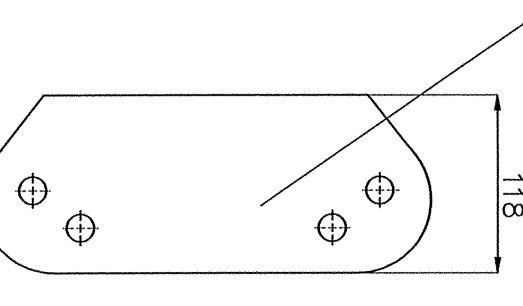
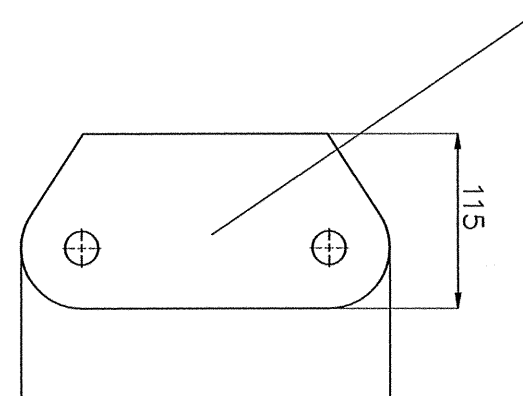
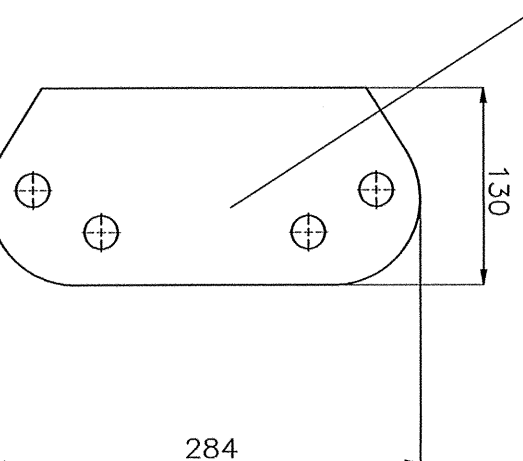
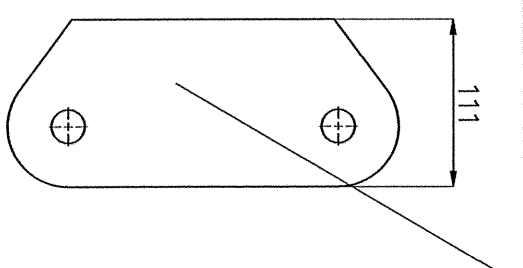
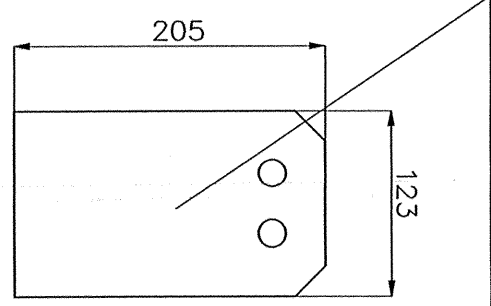
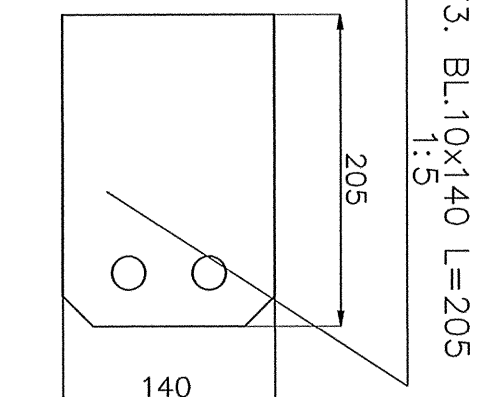
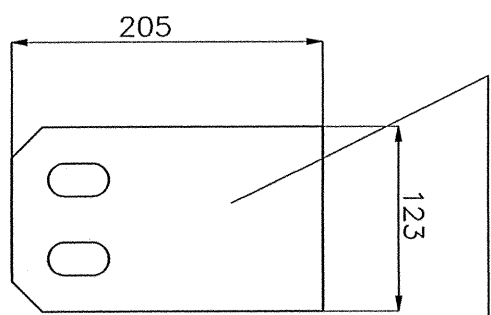
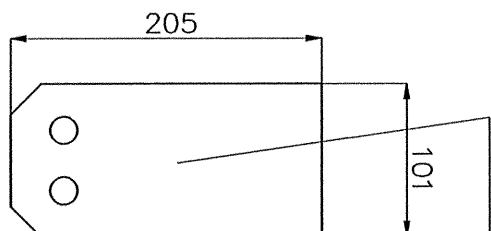
2483. BL.20x115 L=284
1:5

2479. BL.10x118 L=297
1:5

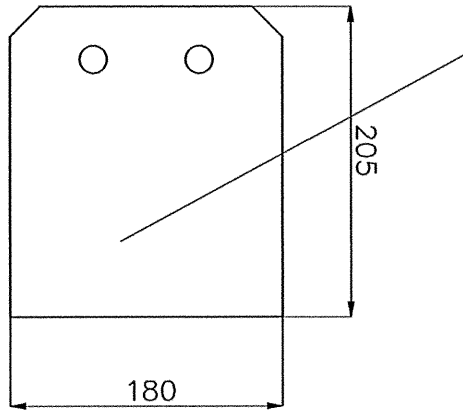
2469. BL.20x126 L=205
1:5

2468. BL.10x139 L=263
1:5

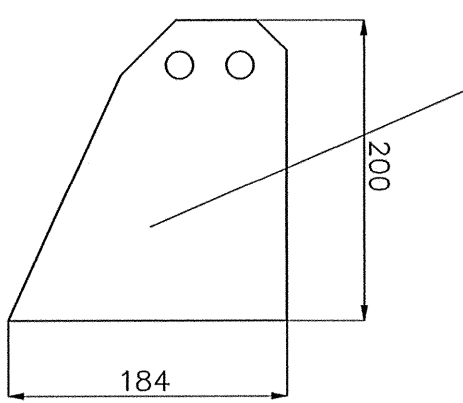
2482. BL.10x122 L=288
1:5



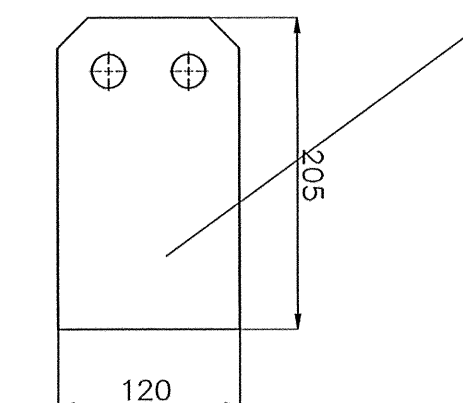
2459. BL.10x180 L=205
1:5



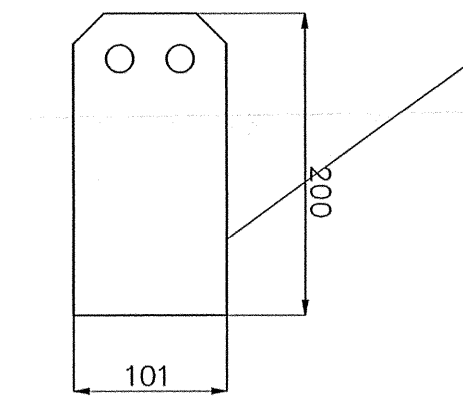
2466. BL.10x184 L=200
1:5



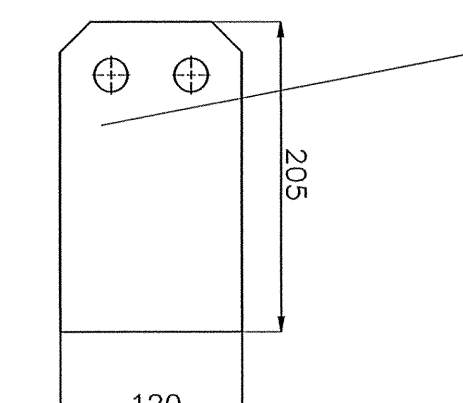
2444. BL.10x120 L=205
1:5



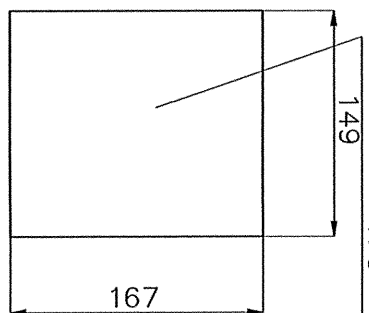
2464. BL.10x101 L=200
1:5



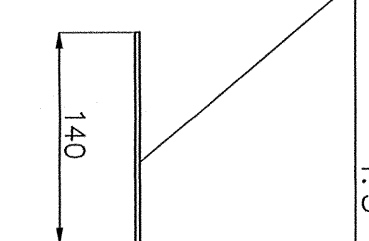
2444. BL.10x120 L=205
1:5



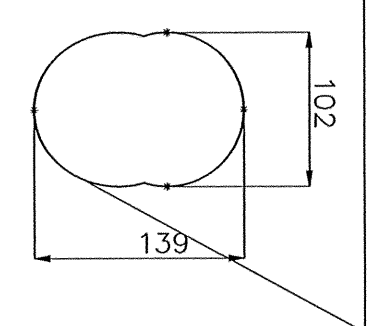
2435. BL.3x149 L=167
1:5



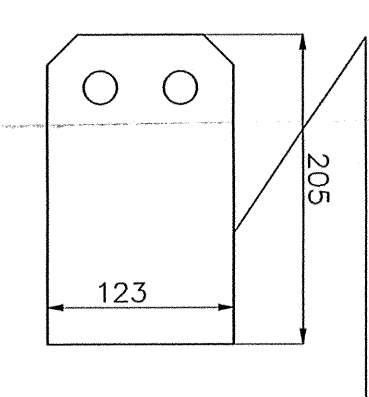
2451. BL.3x140 L=155
1:5



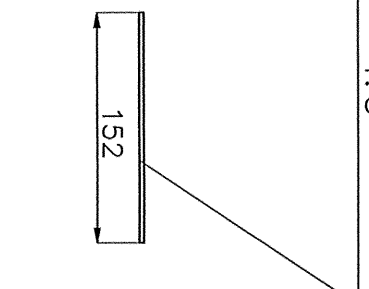
2470. BL.3x102 L=139
1:5



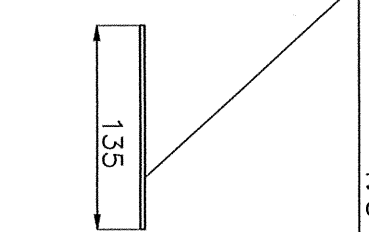
2437. BL.10x123 L=205
1:5



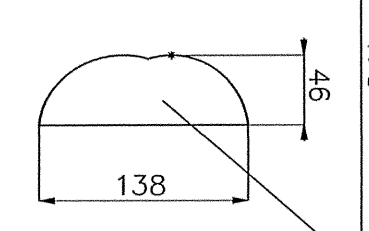
2455. BL.3x152 L=155
1:5



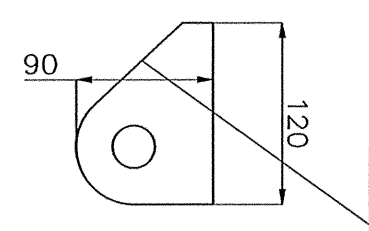
2450. BL.3x135 L=155
1:5



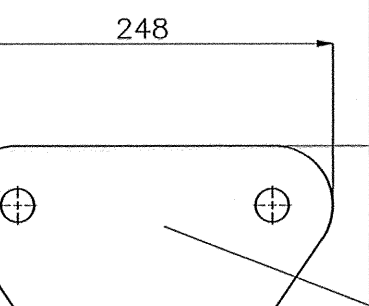
2471. BL.3x146 L=138
1:5



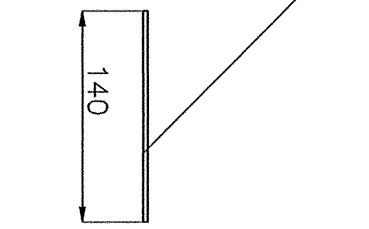
2476. BL.20x90 L=208
1:5



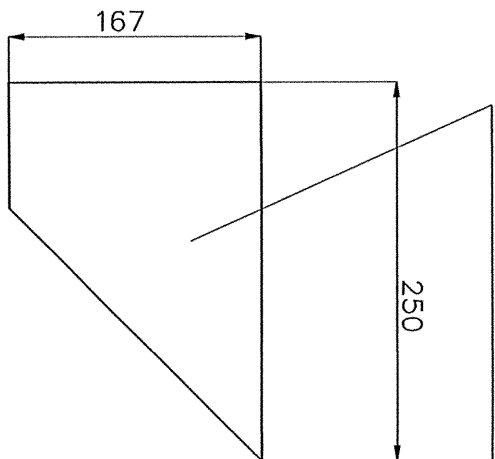
2467. BL.20x114 L=248
1:5



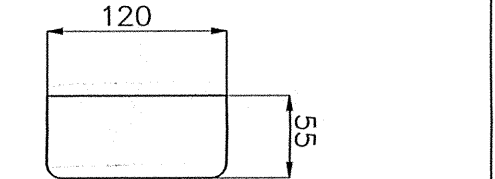
2451. ELEMENT T1A-03 L=140
1:5



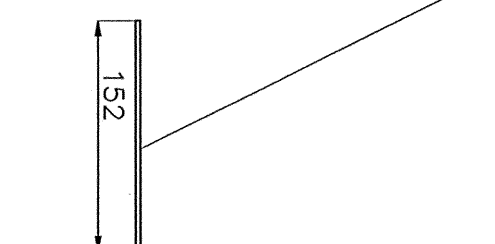
2436. BL.3x167 L=250
1:5



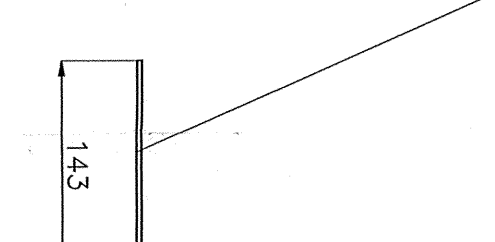
2438. BL.3x55 L=120
1:5



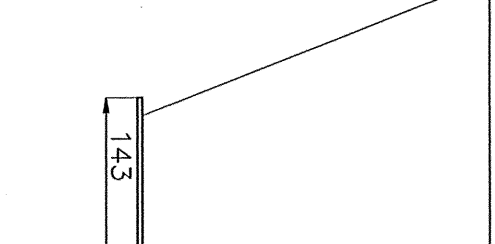
2455. BL.3x152 L=155
1:5



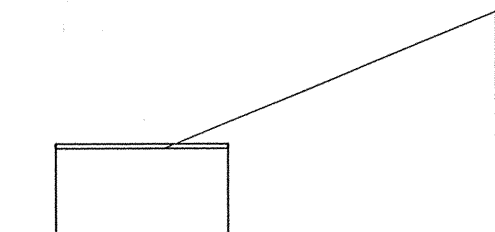
2454. BL.3x143 L=155
1:5



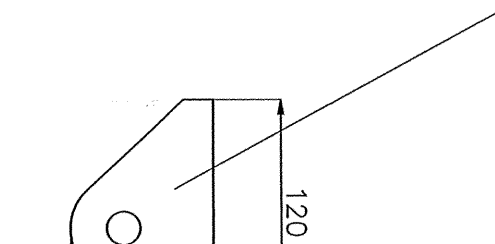
2454. BL.3x143 L=155
1:5



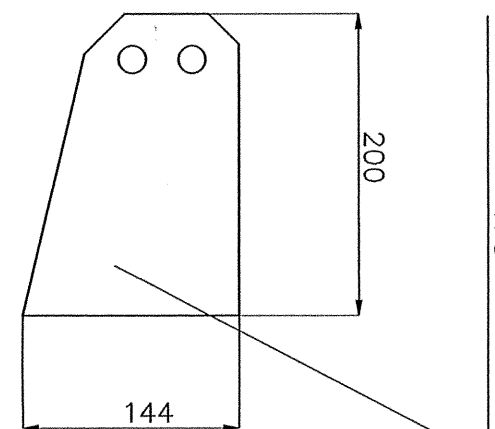
2456. BL.3x53 L=115
1:5



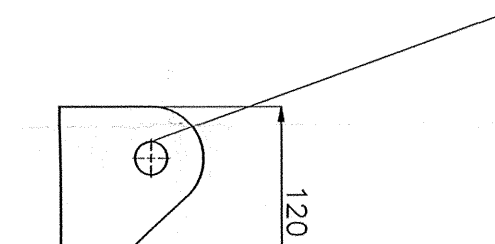
2477. BL.20x95 L=120
1:5



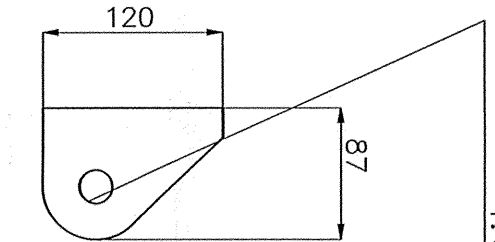
2480. BL.10x144 L=200
1:5



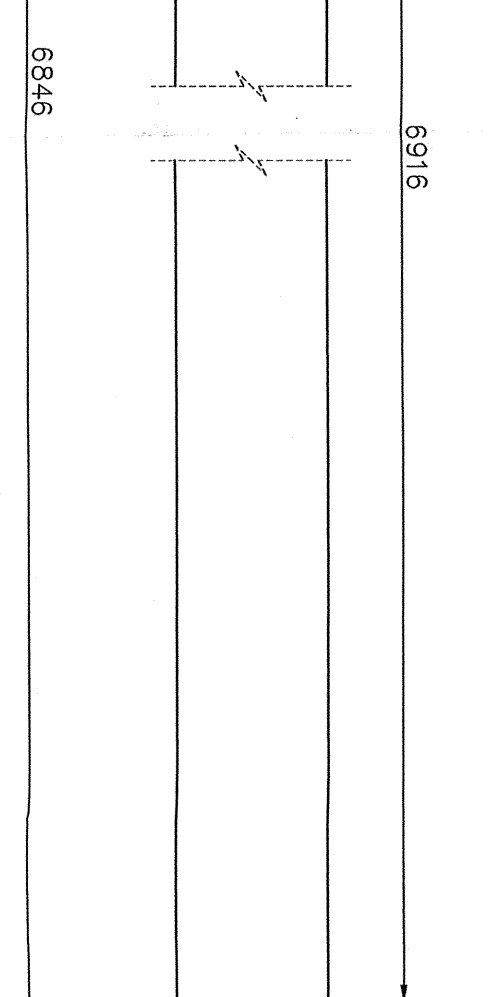
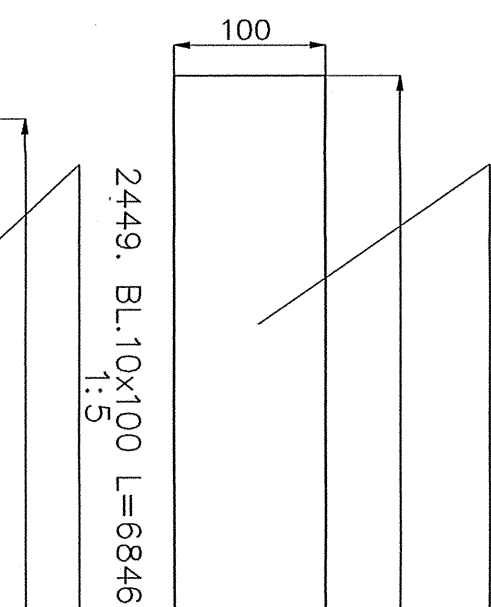
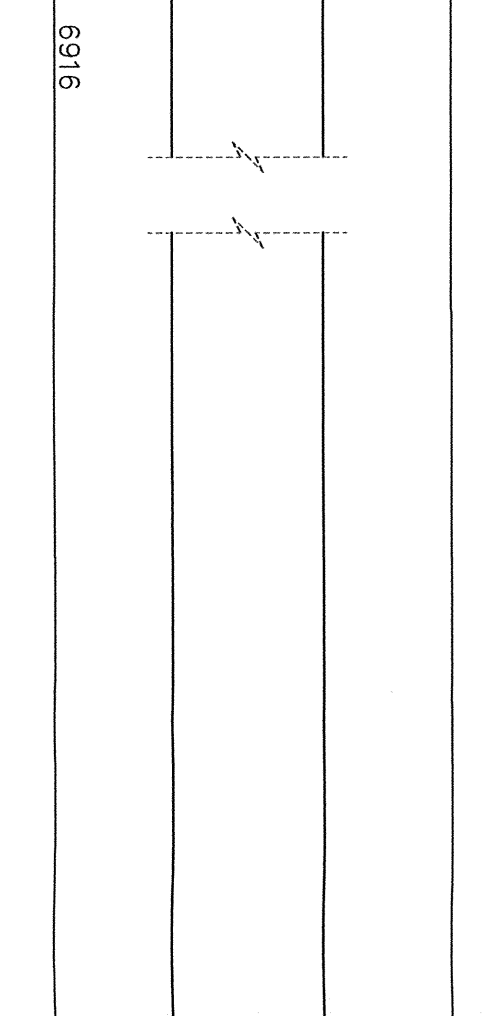
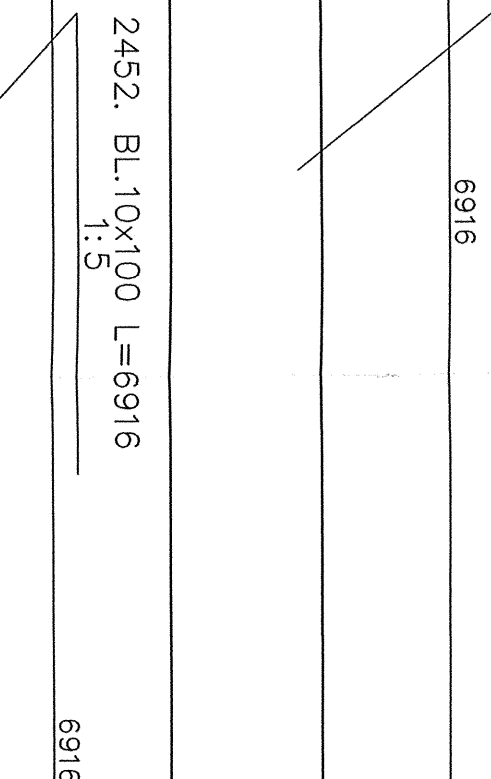
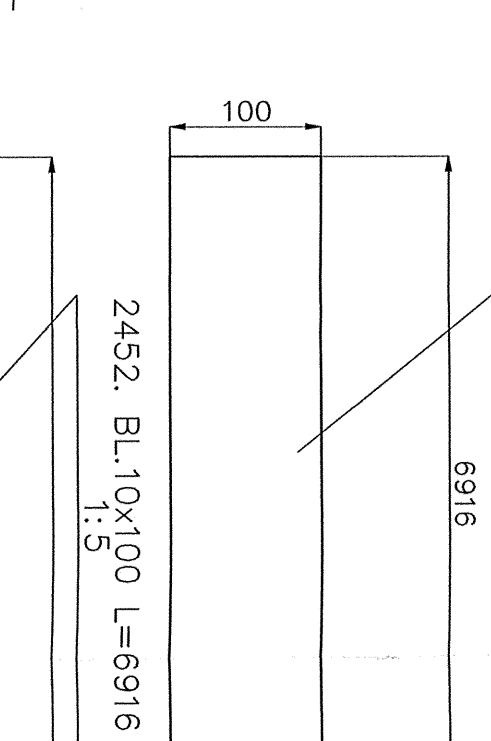
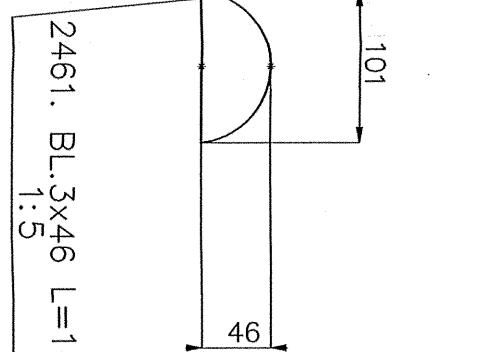
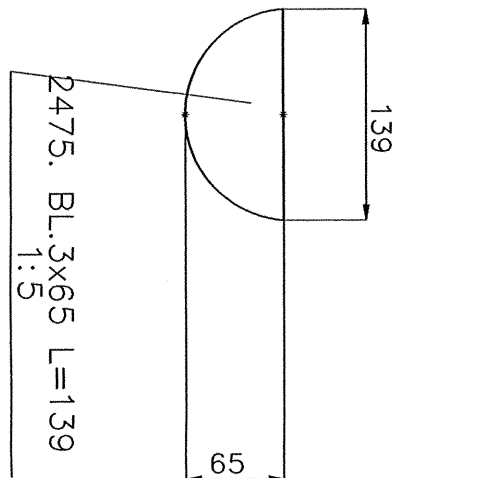
2478. BL.20x95 L=120
1:5



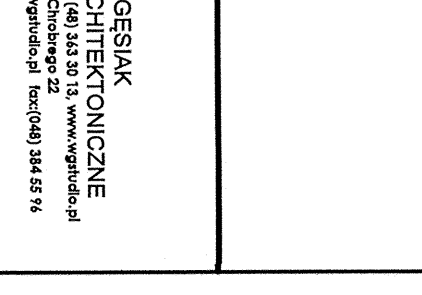
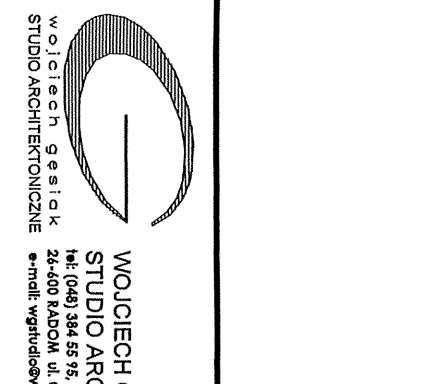
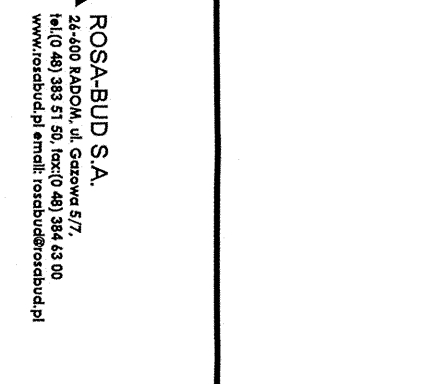
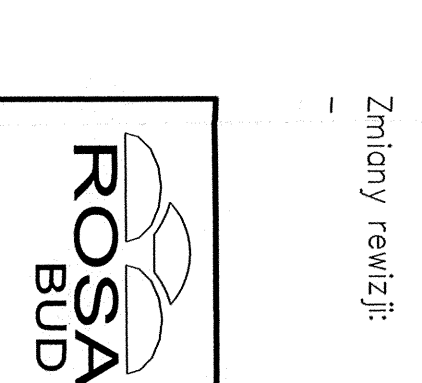
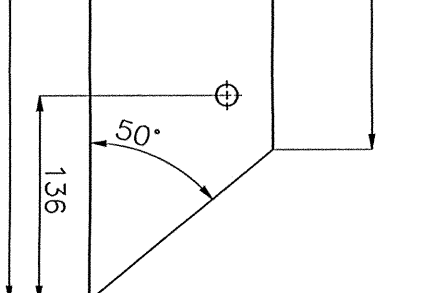
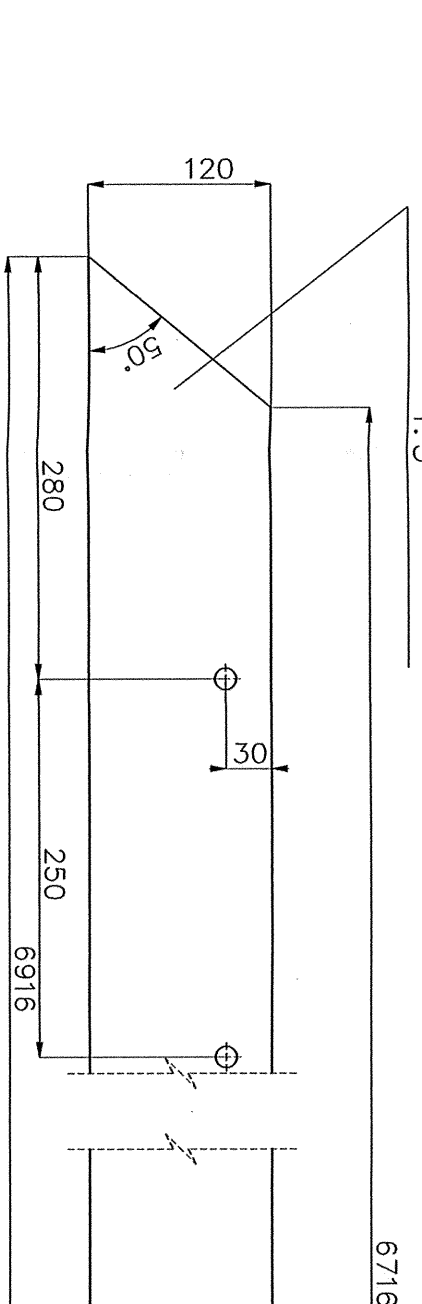
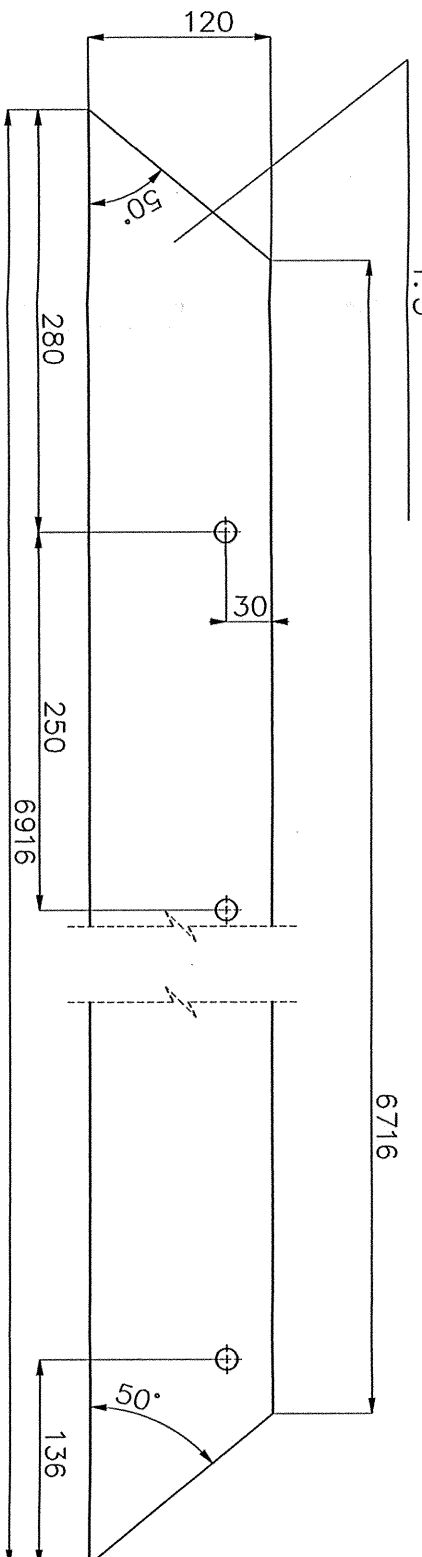
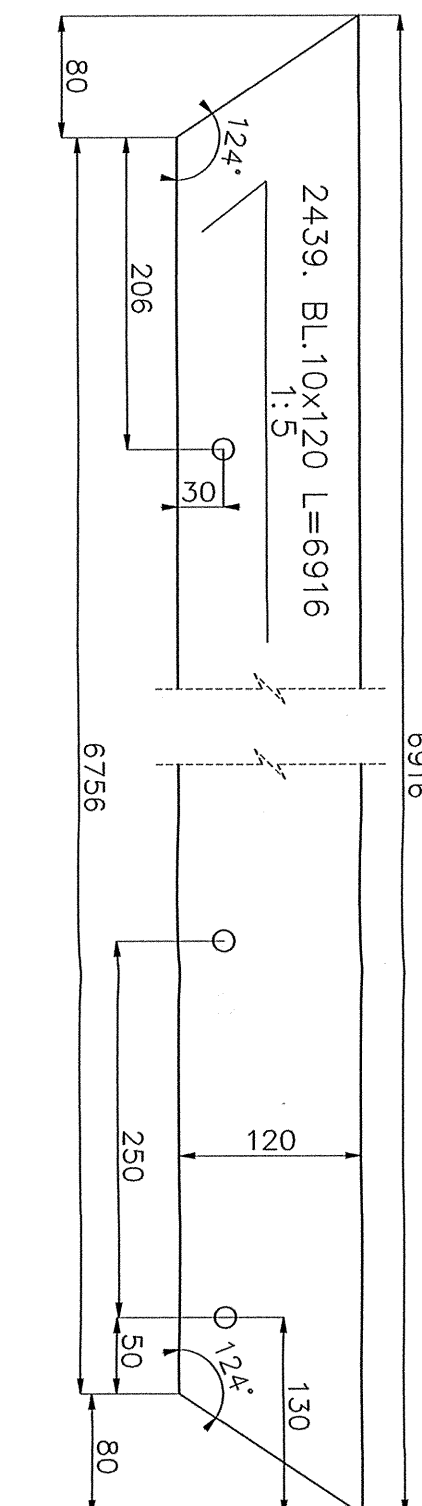
2476. BL.20x87 L=120
1:5



2452. BL.10x100 L=6916
1:5



2453. BL.10x120 L=6916
1:5



UWAGI:

1. Stal konstrukcyjna wg. wykazu.
2. Klasa konstrukcyjna wg. wykazu.
3. Kryterium oceny jakości spoin - Poziom B
4. Poziom B - spoiny wykonane na długości przysięgania.
5. Poziom B - spoiny wykonane na długości przysięgania.
6. Poziom B - spoiny wykonane na długości przysięgania.
7. Poziom B - spoiny wykonane na długości przysięgania.
8. Poziom B - spoiny wykonane na długości przysięgania.
9. Poziom B - spoiny wykonane na długości przysięgania.
10. Rysunek rozpatrywany zgodnie z rysunkiem zestawczym konstrukcji.

Zmiany rewizji:

ROSA
BUD

ROSA-BUD S.A.
ul. Włocławek 147
81-111 Włocławek
tel. 81 385 51 30, 81 385 51 31
www.rosa-bud.pl

WŁOCIECH GSIK
ARCHITEKT

STUDIO ARCHITEKTONICZNE
ul. Włocławek 147
81-111 Włocławek
tel. 81 385 51 30, 81 385 51 31
www.wlociech-gsik.pl

PROJEKT WYKONAWCZY - KONSTRUKCJA STALOWA

Imię i Nazwisko	Nr uprawnień	Podpis
mgr inż. Łukasz Druk	SLK/4503/POK/13	
mgr inż. Joanna Waniurska	-	

Nazwa rysunku: LISTA ELEMENTÓW 10
Numer rysunku: B50-WK-10-10

Skala: 1:5	Nazwa projektu: Projekt warsztatowy konstrukcji stalowej Stadionu pływackiego w Rodomiu przy ul. Struga	Data: 26.01.2018
Forma: 841x594		Rev: REV-A